

# HUNTERS<sup>®</sup>

HERE TO GET *you* THERE



## Amhurst Park

London, N16 5AH

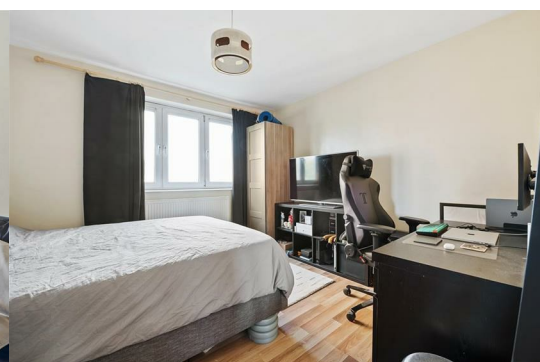
£2,095 Per Calendar Month



Located On Amhurst Park this 2 bedroom flat of a well maintained purpose built block conveniently located close to Stamford Hill Station.

The property comprises of 2 bedrooms, large living space, balcony, fitted kitchen and a tiled bathroom.

The property is ideally located within easy access to Stamford Hill British Rail Station and within ½ a mile of Manor House Station (Piccadilly Line).



[illegible]

**Energy Efficiency Rating**

Very energy efficient - lower running costs

(92 plus) A

(81-91) B

(69-80) C

(55-68) D

(39-54) E

(21-38) F

(1-20) G

Not energy efficient - higher running costs

Current Potential

**Environmental Impact (CO<sub>2</sub>) Rating**

Very environmentally friendly - lower CO<sub>2</sub> emissions

(92 plus) A

(81-91) B

(69-80) C

(55-68) D

(39-54) E

(21-38) F

(1-20) G

Not environmentally friendly - higher CO<sub>2</sub> emissions

Current Potential

**England & Wales** EU Directive 2002/91/EC

185-187 Church Street, Stoke Newington, N16 0UL  
Tel: 0207 2492421 Email: [Hunters.LettingsStokeNewington@hunters.com](mailto:Hunters.LettingsStokeNewington@hunters.com) <https://www.hunters.com>